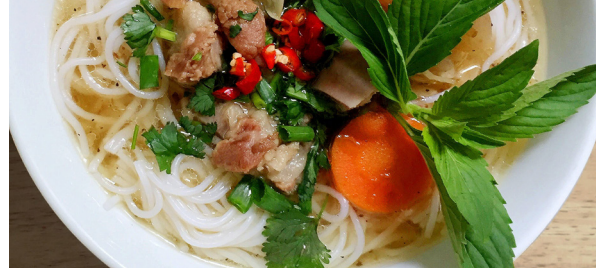




RCTHW2-6B



Pasta Cooker

RCTHW2-6,-6B

Features

The new multipurpose pasta cooker from Hatco® Corporation is easy to operate with three preset temperature settings for cooking pasta and vegetables. It is the ideal choice for hotels, quick-service restaurants and food kiosks because of its attractive appearance, rapid heating capabilities, and robust design. It holds a wide variety of foods, including soups, curries, gravies, and toppings, which gives it greater flexibility.

- Heating and holding modes can be toggled easily
- Three programmable temperature settings, Low/ Medium/ High, 50-65°C / 65-80°C / 80-95°C, respectively with 1°C increment
- High heat efficacy heating elements
- Drain for easy cleaning and maintenance
- Standard auto-fill feature automatically fills and replenishes water without user maintenance or intervention
- Anti-Drip design of well edge prevents water, sauce and condensation from flowing to the outside of unit
- A variety of accessory adapter kits available for soup kettle, sauce warmer, steam warming and reheating pre-cooked pasta
- Available in freestanding or built-in models



RCTHW2-6

with standard Pasta Cooker Adapter and optional Stainless Steel Noodle Ladle shown

Heating Elements



Water Level Sensor, Auto-Fill and Overflow Drain



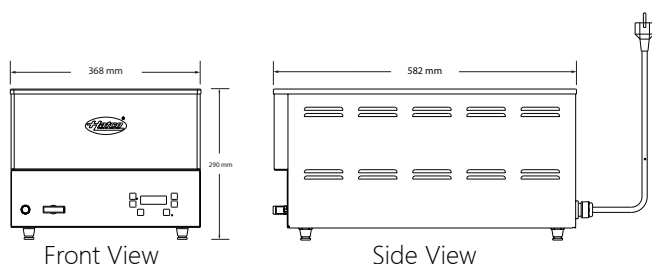
Control Box (RCTHW2-6B Model)



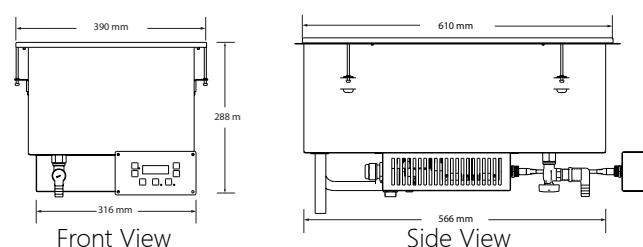
RJ45 Network Connector for Control Box (RCTHW2-6B)



RCTHW2-6



RCTHW2-6B



Model	Voltage (V)	Watts(W)	Amps (A)	Dimensions (W x D x H)	Weight (kg)
RCTHW2-6	240	3000	12.5	368 x 582 x 290 mm	12
RCTHW2-6B	240	3000	12.5	390 x 610 x 288 mm	13

* RCTHW2-6B Shipped with remote control and 2000 mm cable from well to control box

* Recommended well cut-out size: 344 x 586 mm (W x D)

* Dimension of control box 156 x 84 x 67 mm (W x H x D), recommended cut-out size: 132 x 74 mm (W x H)



Accessory



RCTHW-SW
Sauce Warmer Adapter



RCTHW-SK
Soup Kettle Adapter



RCTHW-SP
Steamer Plate Adapter



RCTHW-Basket
Pasta Cooker Adapter



RCTHW-PC
Stainless Steel Noodle
Ladle



RCTHW-4Q
4-Liter (4-Quart) Sauce
Pan w/Lid



RCTHW-7Q
7-Liter (7-Quart) Soup
Pan w/Lid

PRODUCT SPECS HEATMAX™ Pasta Cooker

The HEATMAX™ Pasta Cooker shall be a Hatco model ... as manufactured by the Hatco Corporation China.

Pasta Cooker shall be rated at ... watts, ... volts, single phase, and be ...

millimeters (inches) in overall depth. It shall consist of stainless steel housing and well with two heating element plates, locking hardware and electronic remote control box for built-in model. It shall consist of stainless steel housing and well with two heating element plates, and electronic control panel for countertop model.

HATCO CORPORATION • P.O. Box 340500, Milwaukee, WI 53234-0500 U.S.A.
(800) 558-0607 • (414) 671-6350 • www.hatcocorp.com • support@hatcocorp.com